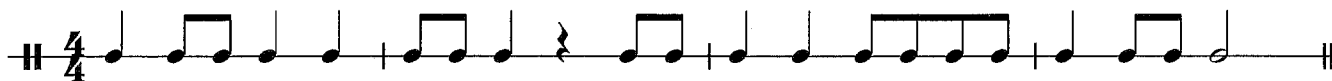


# Rhythmic examples

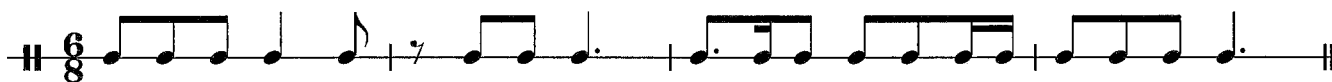
#1



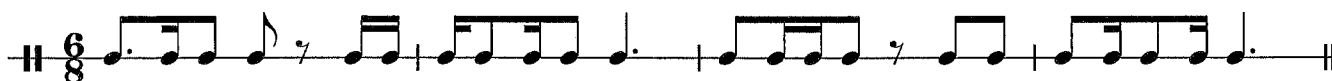
#2



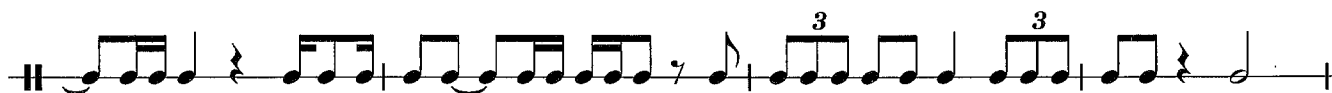
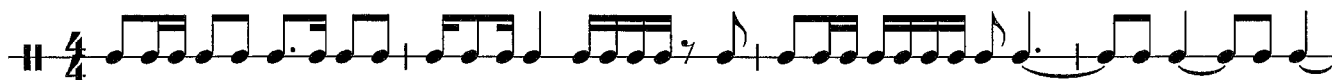
#3



#4



#5



# Melodic examples - Soprano

#1

Two staves of musical notation for example #1. The first staff contains measures 1-2, and the second staff contains measures 3-4. The key signature has two flats (B-flat and E-flat), and the time signature is 4/4. The melody consists of quarter and eighth notes.

#2

Two staves of musical notation for example #2. The first staff contains measures 1-2, and the second staff contains measures 3-4. The key signature has two sharps (F-sharp and C-sharp), and the time signature is 4/4. The melody consists of quarter and eighth notes.

#3

Two staves of musical notation for example #3. The first staff contains measures 1-2, and the second staff contains measures 3-4. The key signature has one flat (B-flat), and the time signature is 6/8. The melody consists of quarter and eighth notes.

#4

Two staves of musical notation for example #4. The first staff contains measures 1-2, and the second staff contains measures 3-4. The key signature has one sharp (F-sharp), and the time signature is 6/8. The melody consists of quarter and eighth notes.

#5

Two staves of musical notation for example #5. The first staff contains measures 1-2, and the second staff contains measures 3-4. The key signature has no sharps or flats, and the time signature is 4/4. The melody consists of quarter and eighth notes, with some accidentals.

# Melodic examples - Alto

#1

Example #1 consists of two staves of music in 4/4 time, key of B-flat major. The first staff begins with a treble clef, a key signature of two flats (B-flat and E-flat), and a 4/4 time signature. The melody starts on G4, moving stepwise up to D5, then down to G4, and continues with various eighth and quarter notes. The second staff continues the melody, ending with a double bar line.

#2

Example #2 consists of two staves of music in 4/4 time, key of B-flat major. The first staff begins with a treble clef, a key signature of two flats, and a 4/4 time signature. The melody starts on G4, moving up to D5, then down to G4, and continues with various eighth and quarter notes. The second staff continues the melody, ending with a double bar line.

#3

Example #3 consists of two staves of music in 6/8 time, key of B-flat major. The first staff begins with a treble clef, a key signature of two flats, and a 6/8 time signature. The melody starts on G4, moving up to D5, then down to G4, and continues with various eighth and quarter notes. The second staff continues the melody, ending with a double bar line.

#4

Example #4 consists of two staves of music in 6/8 time, key of B-flat major. The first staff begins with a treble clef, a key signature of two flats, and a 6/8 time signature. The melody starts on G4, moving up to D5, then down to G4, and continues with various eighth and quarter notes. The second staff continues the melody, ending with a double bar line.

#5

Example #5 consists of two staves of music in 4/4 time, key of B-flat major. The first staff begins with a treble clef, a key signature of two flats, and a 4/4 time signature. The melody starts on G4, moving up to D5, then down to G4, and continues with various eighth and quarter notes. The second staff continues the melody, ending with a double bar line.

# Melodic examples - Tenor

#1

Example #1 consists of two staves of music in G major (one sharp) and 4/4 time. The first staff begins with a treble clef, a key signature of one sharp (F#), and a 4/4 time signature. The melody starts on G4 and moves through a series of eighth and quarter notes, ending on G4. The second staff continues the melody, featuring a mix of eighth and quarter notes, and concludes with a double bar line.

#2

Example #2 consists of two staves of music in G major (one sharp) and 4/4 time. The first staff begins with a treble clef, a key signature of one sharp (F#), and a 4/4 time signature. The melody starts on G4 and moves through a series of eighth and quarter notes, ending on G4. The second staff continues the melody, featuring a mix of eighth and quarter notes, and concludes with a double bar line.

#3

Example #3 consists of two staves of music in B-flat major (two flats) and 6/8 time. The first staff begins with a treble clef, a key signature of two flats (Bb, Eb), and a 6/8 time signature. The melody starts on Bb4 and moves through a series of eighth and quarter notes, ending on Bb4. The second staff continues the melody, featuring a mix of eighth and quarter notes, and concludes with a double bar line.

#4

Example #4 consists of two staves of music in B-flat major (two flats) and 6/8 time. The first staff begins with a treble clef, a key signature of two flats (Bb, Eb), and a 6/8 time signature. The melody starts on Bb4 and moves through a series of eighth and quarter notes, ending on Bb4. The second staff continues the melody, featuring a mix of eighth and quarter notes, and concludes with a double bar line.

#5

Example #5 consists of two staves of music in B-flat major (two flats) and 4/4 time. The first staff begins with a treble clef, a key signature of two flats (Bb, Eb), and a 4/4 time signature. The melody starts on Bb4 and moves through a series of eighth and quarter notes, ending on Bb4. The second staff continues the melody, featuring a mix of eighth and quarter notes, and concludes with a double bar line.

# Melodic examples - Bass

#1

Example #1 consists of two staves of music in bass clef, 4/4 time, and key of B-flat major. The first staff begins with a quarter note G2, followed by quarter notes A2, Bb2, and C3. The second staff continues with quarter notes D3, Eb3, F3, and G3, then quarter notes A3, Bb3, and C4, ending with a quarter note D4.

#2

Example #2 consists of two staves of music in bass clef, 4/4 time, and key of B-flat major. The first staff begins with a quarter note G2, followed by quarter notes A2, Bb2, and C3. The second staff continues with quarter notes D3, Eb3, F3, and G3, then quarter notes A3, Bb3, and C4, ending with a quarter note D4.

#3

Example #3 consists of two staves of music in bass clef, 6/8 time, and key of D major. The first staff begins with a quarter note G2, followed by quarter notes A2, B2, and C3. The second staff continues with quarter notes D3, Eb3, F3, and G3, then quarter notes A3, B3, and C4, ending with a quarter note D4.

#4

Example #4 consists of two staves of music in bass clef, 6/8 time, and key of B-flat major. The first staff begins with a quarter note G2, followed by quarter notes A2, Bb2, and C3. The second staff continues with quarter notes D3, Eb3, F3, and G3, then quarter notes A3, Bb3, and C4, ending with a quarter note D4.

#5

Example #5 consists of two staves of music in bass clef, 4/4 time, and key of D major. The first staff begins with a quarter note G2, followed by quarter notes A2, B2, and C3. The second staff continues with quarter notes D3, Eb3, F3, and G3, then quarter notes A3, B3, and C4, ending with a quarter note D4.